

BONE JEWELRY

Most of our jewelry is hand crafted and created by Victorious Craft group. The group uses waste bones sourced from butcheries to create unique jewelry and wares. The name Victorious Crafts Group came from the belief that members wanted to have victory over poverty, environmental degradation and other negative influences and events in their communities.

Victorious Craft is a youth owned, youth led and youth managed group that was formed in 2006 by three young men out of the need for job creation amongst the unemployed youth in the Kibera slums

<http://victoriousbones.com>



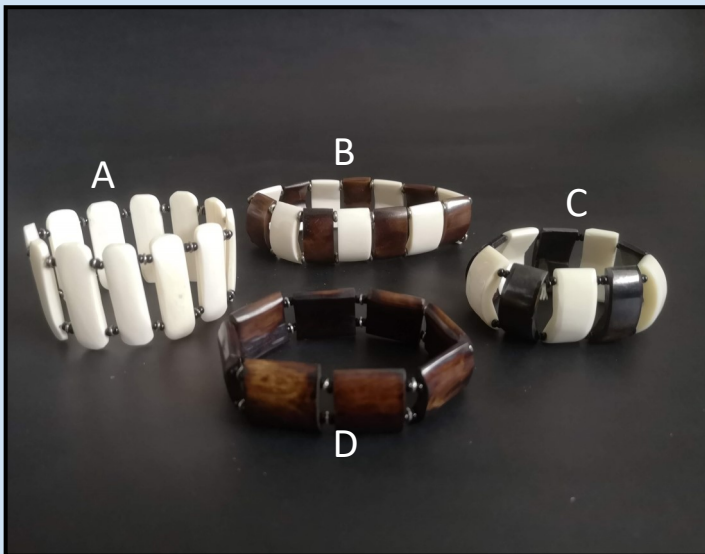


#1 - \$15
WIDE BAND
PATTERNED



#2 - \$15
WIDE BAND
LONG TOOTH

ALL BRACELETS ARE STRUNG WITH ELASTIC.



#3 - \$10
MEDIUM BAND
PLAIN



#4 - \$10
MEDIUM BAND
PATTERNED



#5 - \$5
BONE BANGLES

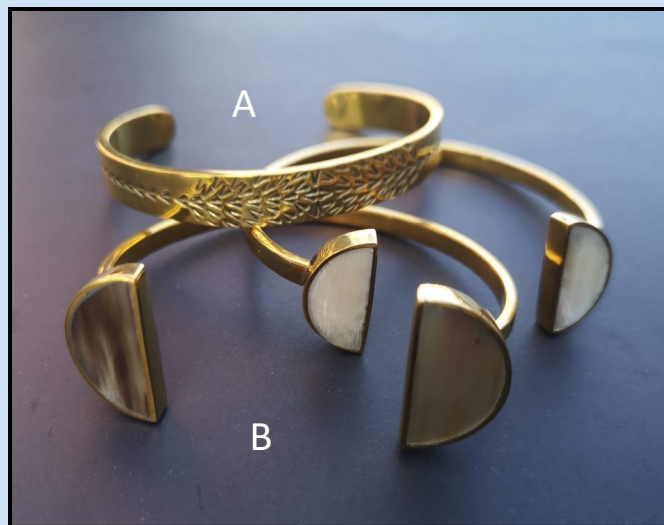


#6 - 2 for \$5
HORN BANGLES



#7 - \$15
A FEW RANDOM
EXTRA PIECES
Only one of each in stock

BRASS, BEADS
and LEATHER
Made by various
artists.



#8 - \$20
BRASS BRACELET
A) ETCHED
B) BONE INLAY



#9 - \$15
BEADED WRIST BANDS

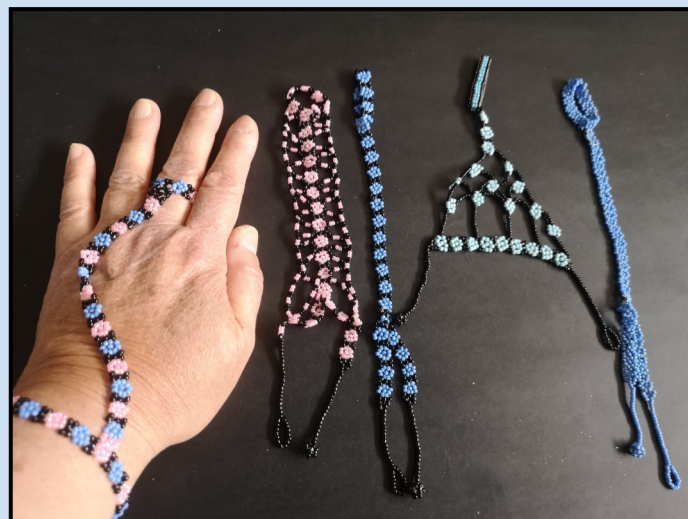


#10 - \$15
METAL INSIGNIA LEATHER BANDS



#11 - 2 FOR \$5
**SMALL CHILDREN
SIZED HORN
BANGLES**

#12 - \$5
SPIRAL BEADED



#13 - \$5
**BEADED FINGER
BRACELET**



**#14 - \$25
SHORT BIB
BONE NECKLACES**



**#15 - \$25
SHORT BIB
NEW YEAR DESIGN BONE
NECKLACE**



#16 - \$15

BONE PENDANT AND BEADED NECKLACE

Pendants hang straight down about 20 - 23 cm or 8 or 9 inches

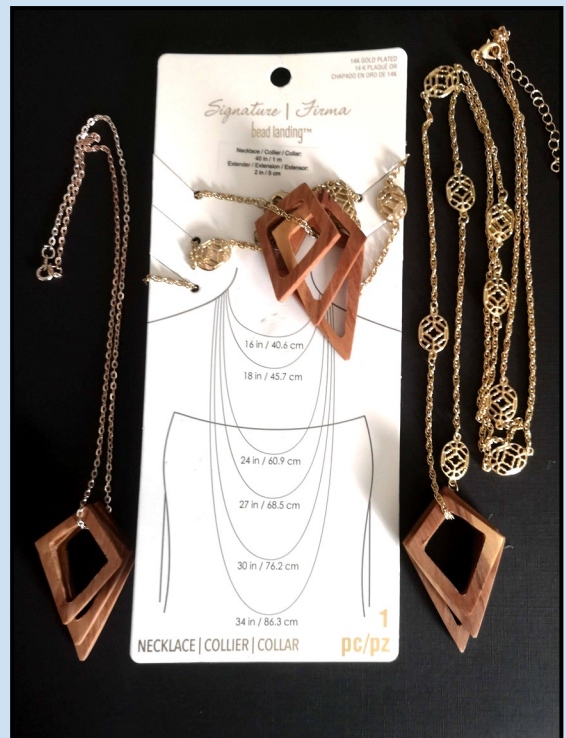


#17 - \$20

A) NATURAL SOAPSTONE NECKLACE

B) BONE CHEVON

32 cm - 13 inch chain



#18 - \$15

WOODEN PENDANT

A) 23cm - 8.5 inch chain

B) Long adjustable chain



#19 - \$15
**BONE CHOKERS &
 PENDANT ON CHAIN**



#20 - \$15
LARGE BONE PENDANTS
 Chains hang approx 20 cm - 8 inches

ALL PIECES ON THIS PAGE - ONLY ONE OF EACH IN STOCK



#21 - \$15
SMALL BONE PENDANTS & BEAD NECKLACE

- A) Chain hangs about 28 cm - 11 inches
- B) 22 cm - 8 inches
- C) 32 cm - 13 inches
- D) Full lengths 34 cm - 14 inch
42 cm - 17 inches
- E) Adjustable



#22
BEADED NECKLACES

- A) Chain Hangs 20 cm - 7.5 inches \$10
- B) 19 cm - 7 inches - \$15
- C) 20 cm - 8 inches \$10

A collection of various handmade earrings displayed on a blue background. The earrings include wooden designs (leaves, treble clef, hearts with bows), circular wooden discs with fringe, teardrop-shaped wooden earrings with holes, heart-shaped wooden earrings with bows, beaded earrings (yellow, blue, multi-colored), long thin metal earrings, and large multi-strand beaded earrings in black, white, and red.

Earrings measured top to bottom
range approx. 3 to 4 cm or
1 to 1.5 inches



#23 Bone & Brass - \$10



#24 Wood - \$10



#25 Small Beaded - \$10



#26 Large Beaded - \$15

